

When is the festival?

Useful English
When's the ...?
It's on ...

1) Say the months of the year.



- January
- February
- March
- April
- May
- June
- July
- August
- September
- October
- November
- December

2) Look and say.

fifth	5 th	10 th	tenth
fourth	4 th	9 th	ninth
third	3 rd	8 th	eighth
second	2 nd	7 th	seventh
first	1 st	6 th	sixth

3) Look.



- 1) When is the birthday party?
- 2) When is your birthday?

4) Look at these posters.

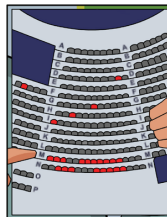
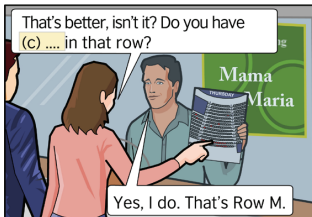
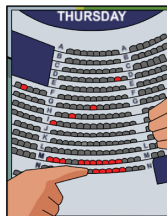
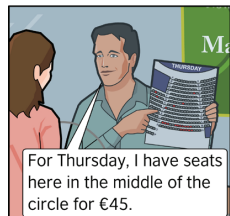
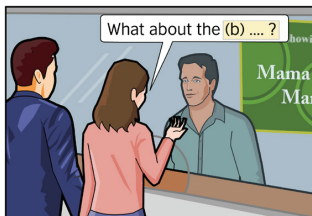
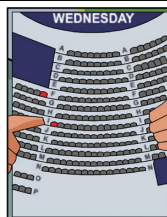


- 1) When is the festival in Australia?
- 2) When is the football final?
- 3) When is the festival in the USA?

5) Read. What is she doing?

6) Read again. Fill in the gaps with these words.

- 1) two
- 2) tickets
- 3) fifth



7) Fill in the gaps to spell the months correctly.

- 1) _ _ g _ st
- 2) J _ n _ _ ry
- 3) J _ n _
- 4) _ ct _ b _ r
- 5) F _ br _ _ ry
- 6) D _ c _ mb _ r

Can you put these months in the right order?

8) Don't look at the picture in activity 2. Write the words.

- 1) 1st
- 2) 2nd
- 3) 3rd
- 4) 6th
- 5) 9th

- 3) 1) 1st May 2) It's on the
4) 1) 5-15 February 2) 3rd November 3) 4th July
5) She is buying tickets for a show.
6) a) 2, b) 3, c) 1
7) 2) January 5) February 3) June 1) August
4) October 6) December
8) 1) first 2) second 3) third 4) sixth 5) ninth

Answers

What's your favourite country?

Useful English

I'm from ...
I've been to ...
I'd like to go to ...

1) Look at this map of the world. Match the cities to the countries.

- a) Brazil
- b) China
- c) India
- d) Russia
- e) USA

- 1) London – England
- 2) Islamabad – Pakistan
- 3) New Delhi – _____
- 4) Berlin – Germany
- 5) Beijing – _____
- 6) Cairo – Egypt
- 7) New York – _____
- 8) Moscow – _____
- 9) Rio de Janeiro – _____



2) Read and fill in the gaps.

"I'm British. I've been to China, Japan, the USA, oh, lots of places. I would like to go to Brazil and Russia!"

"We're Chinese. We've been to lots of places in China. It's a very big country! We'd love to go to Brazil, too!"

"I'm Australian. I've been to Thailand and lots of places in Europe – Germany, Italy, Spain, Poland, Croatia, all over the place. I'd love to go to India one day and Mexico!"

From	Have been	Would like to go
Great Britain	China, Japan a)	Brazil and Russia
China	places in b)	Brazil
Australia	Thailand, c), Italy, d)....., Poland and Croatia	India and e)

4) Look again.

1) What colour is the Chinese flag?

It's red and _____.

2) What colour is the Australian flag?

It's blue, white and _____.

5) Match the country and the nationality.

China	Brazilian
Italy	Chinese
Brazil	German
Germany	British
Spain	Italian
Great Britain	Spanish

3) Read the sentences and the comic strip. Fill in the gaps with the correct colours.

The German flag is black, yellow and red.

The Italian flag is green, white and red.

The French flag is blue, white and red.

6) Find the colours.

yellow red white blue black green



Answers

1) 3) c) China
5) b) Italy
7) e) Brazilian
8) d) German
9) a) Spain

2) a) the USA
b) China
c) Germany
d) Spain
e) Mexico

3) a) white
b) red
c) black
4) 1) yellow
2) red

6) a) yellow
b) red
c) white
d) blue
e) black
f) green

What's the weather like?

Useful English
 What's the weather like ...?
 It's hot / cold.
 It's sunny / windy / raining / snowing.

1) Read. Match the text to the country.



1) Well, it rains a lot, more in the north than in the south. The south is warmer than the north, but Britain isn't usually hot. It always snows in the north of the country in the winter and usually the south too. Winter is December, January and February and it is really cold sometimes. Spring and autumn are very windy and, as I said, it rains a lot!

2) We have 4 seasons. In the summer, from December to March, it's hot and humid. The autumn is sometimes quite cold and windy. Around June, it starts to snow. On the South Island, it gets very cold and very icy. Winter is my favourite season because I love skiing! The spring is lovely. It's usually warm with lots of rain. That's why New Zealand is so green!

2) Match.

- | | |
|-------------------------------------|----------------------|
| 1) In Great Britain, winter is from | a) December to March |
| 2) In New Zealand, winter is from | b) June to August |

4) What's the weather like in New Zealand?

- 1) In spring, it's usually warm with lots of _____.
- 2) It's _____ and humid in the summer.
- 3) The autumn is sometimes quite _____ and windy.
- 4) Around June, it starts to _____.

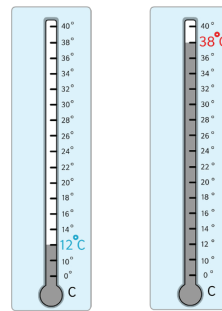
5) Read and fill in the gaps with these words.

- 1) today
- 2) night
- 3) day

3) Read the texts again. Can you find the names of the 4 seasons?

spring 1) _____ 2) _____ winter

Look.



6) Read again. Answer these questions.

- 1) Where was he last week?
- 2) Where is he now?
- 3) What was the weather like during the day?
- 4) What was the weather like at night?
- 5) What is the weather like today?

7) What's the weather like where you live?

- It's cold.
- It's hot.
- It's sunny.
- It's windy.
- It's raining.
- It's snowing.

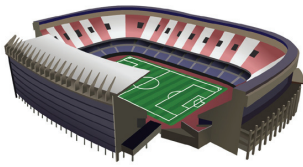
Answers

1) 1) B 2) 1) a) 3) 1) summer 4) 1) rain 5) a) 3 6) 1) In the mountains.
 2) A 2) b) 2) autumn 2) hot b) 2 3) Hot and sunny.
 4) Very cold. c) 1 4) snow
 5) It's going to rain. There's going to be a storm. It's very windy.

Is there a bank near here?

Useful English
Is there a bank near here?
Where is the nearest ...?

1) Look.



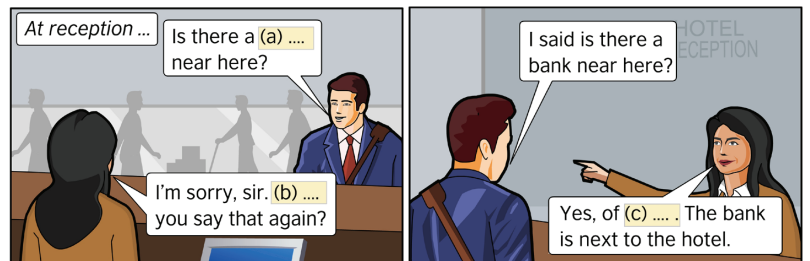
stadium	airport	theatre	museum	statue
---------	---------	---------	--------	--------

2) Look at the words again. What are these words?

- 1) tauste
- 2) reethat
- 3) triapro
- 4) summue
- 5) daitums

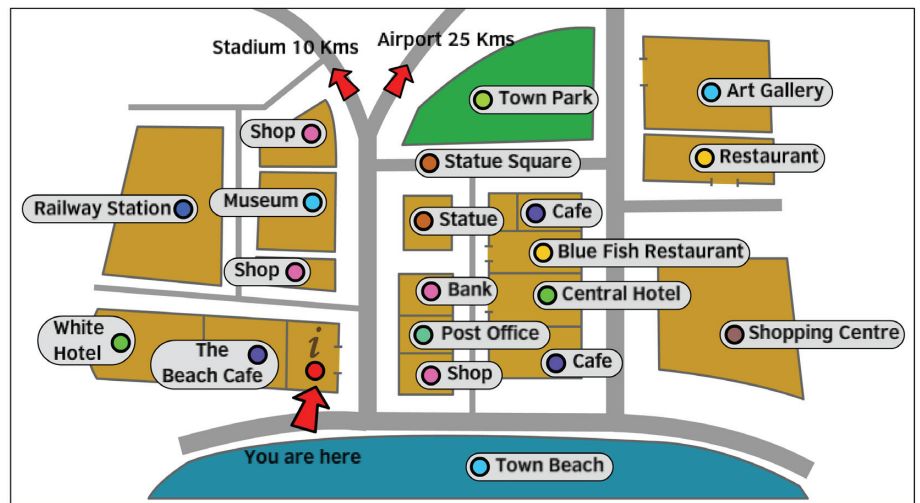
3) Read and fill in the gaps.

- 1) course
- 2) bank
- 3) Could



4) Find these places on the map.

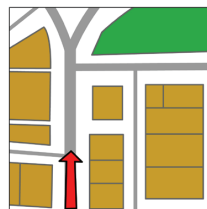
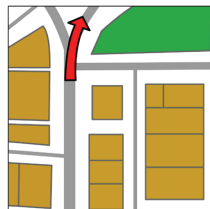
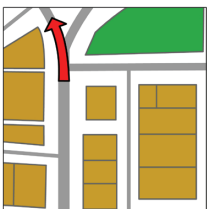
- 1) There is a restaurant next to the Art Gallery.
- 2) The shopping centre is opposite the Central Hotel.
- 3) The museum is opposite the statue.
- 4) The bank is next to the post office.



5) Now, find these places.

- 1) The _____ is opposite the railway station.
- 2) The _____ is next to the bank.
- 3) The Town Park is opposite the _____.
- 4) The _____ is next to the White Hotel.

6) Look.



left	right	straight on
------	-------	-------------

7) Find these places on the map. Start from "You are here" ●

- 1) Turn left, go straight on. It's opposite the statue.
- 2) Turn right, turn left, go straight on past the beach. Turn left. It's on the right.
- 3) Turn left, turn left again. Go straight on. It's next to the Beach Café.

8) Try this with a friend. Choose a place on the map. Give your friend directions.

Answers

2) 1) statue
2) 2) theatre
3) 3) airport
4) 4) museum
5) 5) stadium
3) a) 2
7) 1) the museum
2) the shopping centre
3) the Art Gallery
4) Beach Cafe
5) 1) White Hotel
c) 1
b) 3